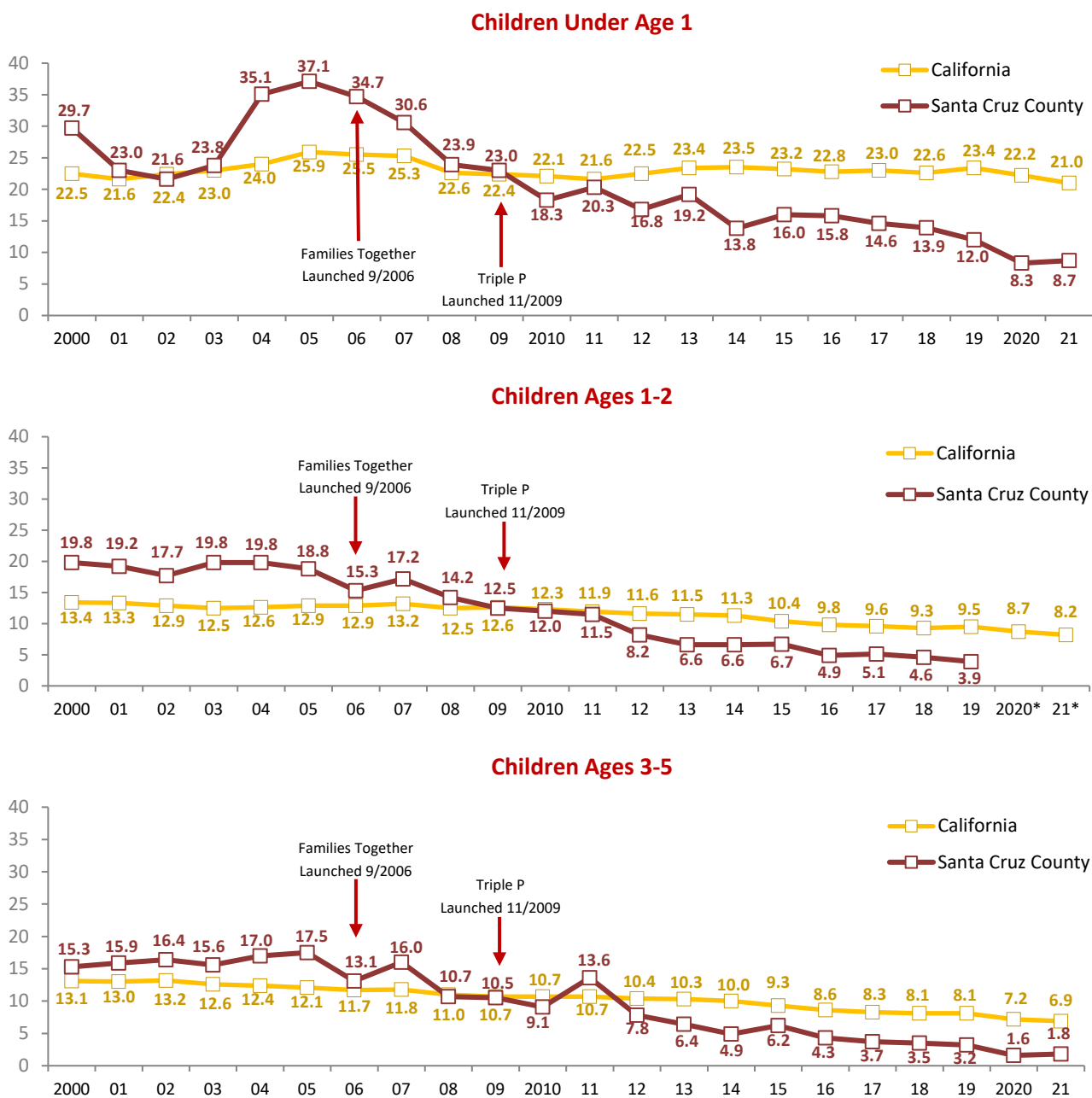


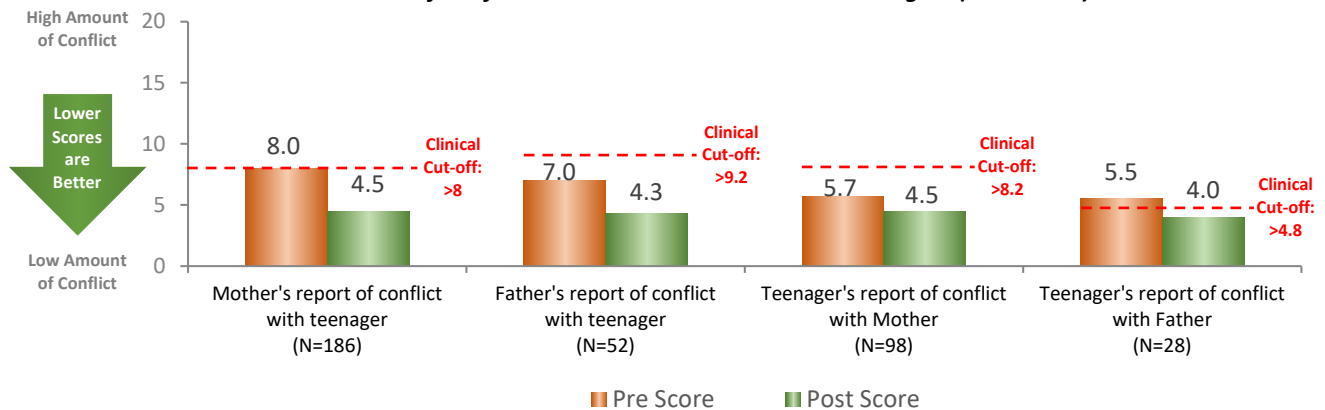
**Figure 27: Rate of substantiated allegations of child maltreatment in Santa Cruz County and California (per 1,000)**



\* Data for some years are not available due to the Data De-identification Guidelines (DDG) adopted by California Department of Social Services, which require that statistically low values be masked on all public-facing resources in order to protect the confidentiality of individuals served by CDSS and the counties.

Source: Webster, D., Lee, S., Dawson, W., Magruder, J., Exel, M., Cuccaro-Alamin, S., Putnam-Hornstein, E., Wiegmann, W., Saika, G., Hammond, I., Ayat, N., Gomez, A., Jeffrey, K., Prakash, A., Berwick, H., Hoerl, C., Yee, H., Flamson, T., Gonzalez, A. & Ensele, P. (2022). *CCWIP reports*. Retrieved Aug 19, 2022, from University of California at Berkeley California Child Welfare Indicators Project website. URL: <https://ccwip.berkeley.edu>

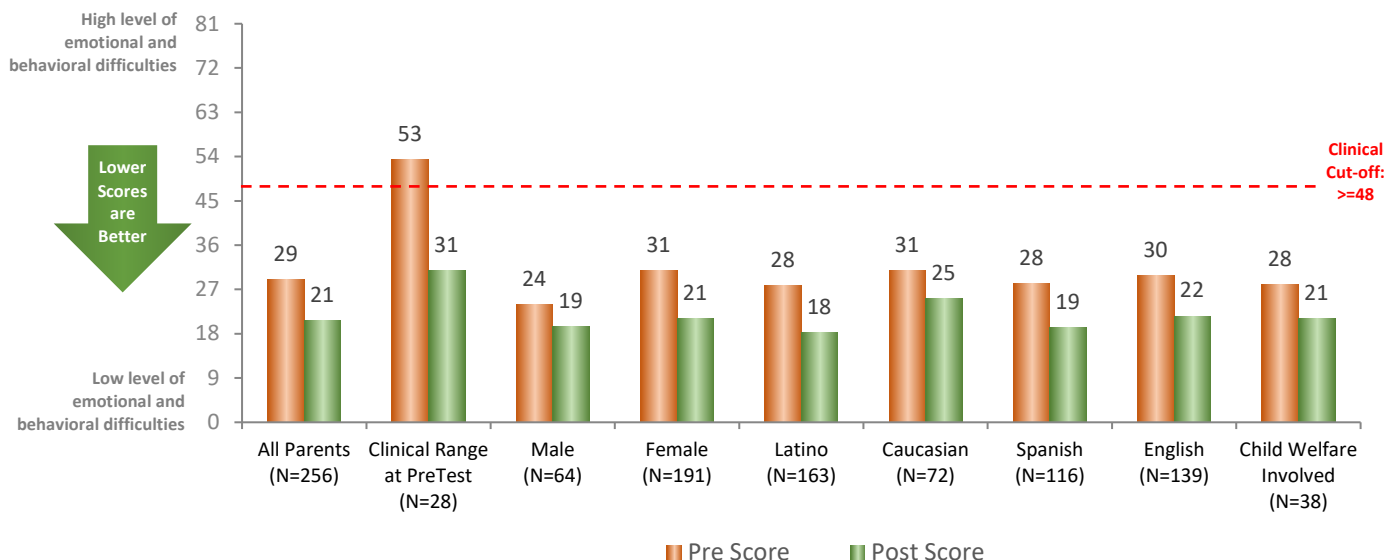
Notes: Previous years' data have been updated to reflect slight methodological changes made by the California Child Welfare Indicators Project, and to reflect the most current calculations. Results now include the category "Missing," if present (i.e., includes children with missing data).

**Amount of Conflict Between Parents and Their Teenagers (2010-2022)**

Source: Triple P data from the *Conflict Behavior Questionnaire*, Jan. 2010 - June 2022.

Note: For the analyses of the amount of improvement, participants who report the lowest amount of conflict at "Pre" are omitted from the improvement analyses, as no improvement is possible. There may therefore be a slightly lower number of clients included in the improvement analyses than the total number of all clients reported in these charts of average Pre/Post scores. Only parents living in Santa Cruz County are included in this analysis.

- **Improvements in child behavior and emotional regulation.** On average, all Parents and all sub-populations reported *significant* improvements in their children's challenging behaviors and emotional difficulties.
  - On average, All Parents and all sub-populations reported that their child had fewer emotional and behavioral difficulties by the end of services. The amount of improvement was highest for parents who had scores in the Clinical Range of Concern at the beginning of their services, and was also high in the Female and Latino sub-populations.
  - In addition, All Parents and all sub-populations experienced a moderate to large magnitude of change, indicating that these observed differences were not only statistically *significant* but also *meaningful*.

**Child Emotional and Behavioral Difficulties (2018-2022)**

Source: Triple P data from the *Child Adjustment and Parent Efficacy Scale: Total Intensity subscale*, July 2018 – June 2022.

Note: For the analyses of the amount of improvement, participants who report the lowest level of difficulties at "Pre" are omitted from the improvement analyses, as no improvement is possible. There may therefore be a slightly lower number of clients included in the improvement analyses than the total number of all clients reported in these charts of average Pre/Post scores. Only parents living in Santa Cruz County are included in this analysis.



A PROGRAM OF  
**FIRST 5**  
 SANTA CRUZ COUNTY  
[triplep.first5scc.org](http://triplep.first5scc.org)

Providing evidence-based tools to raise happy, healthy children in Santa Cruz County since 2010



## TRIPLE P SANTA CRUZ COUNTY PARTICIPANTS (2010 – 2022)

Approximately

**2,000**

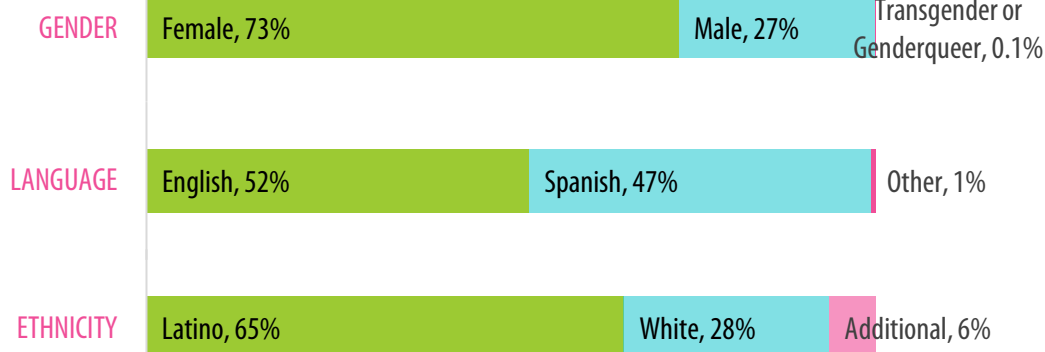
parents, caregivers & children (0-17)

benefit from Triple P services

each year.<sup>1</sup>



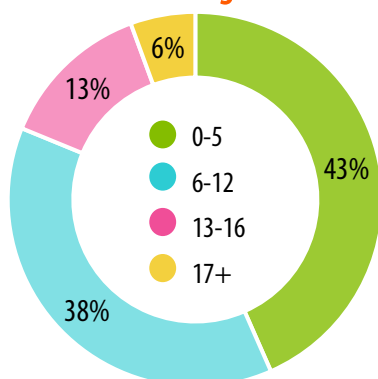
Triple P is reaching **diverse parents and caregivers** in Santa Cruz County.



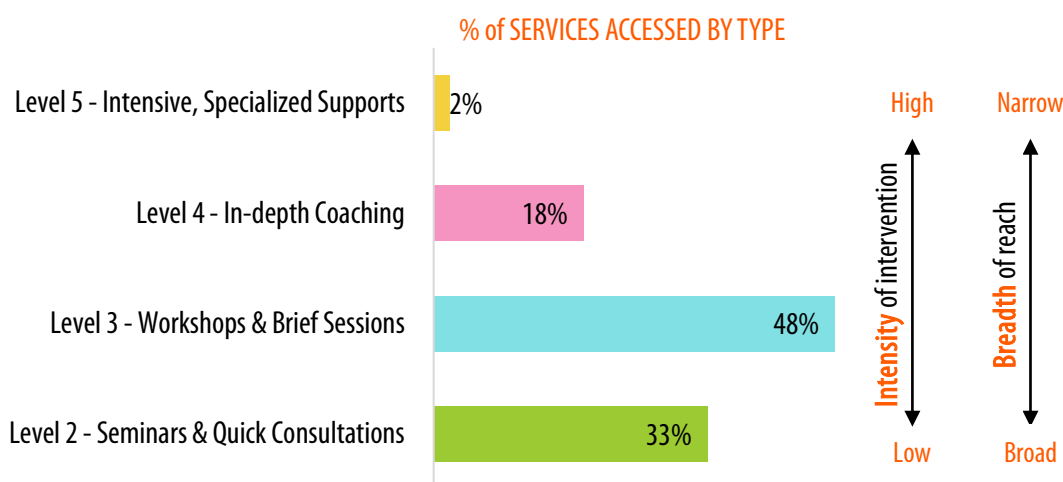
Additional: Black (1%), Asian & Pacific Islander (1%), American Indian & Alaska Native (.8%), Multiracial (3.3%), Other (.2%)

## TRIPLE P SERVICES ACCESSED (2010 – 2022)

Parents and caregivers are **seeking support** for raising children of all ages.



Families are accessing the **full array of Triple P services** available.

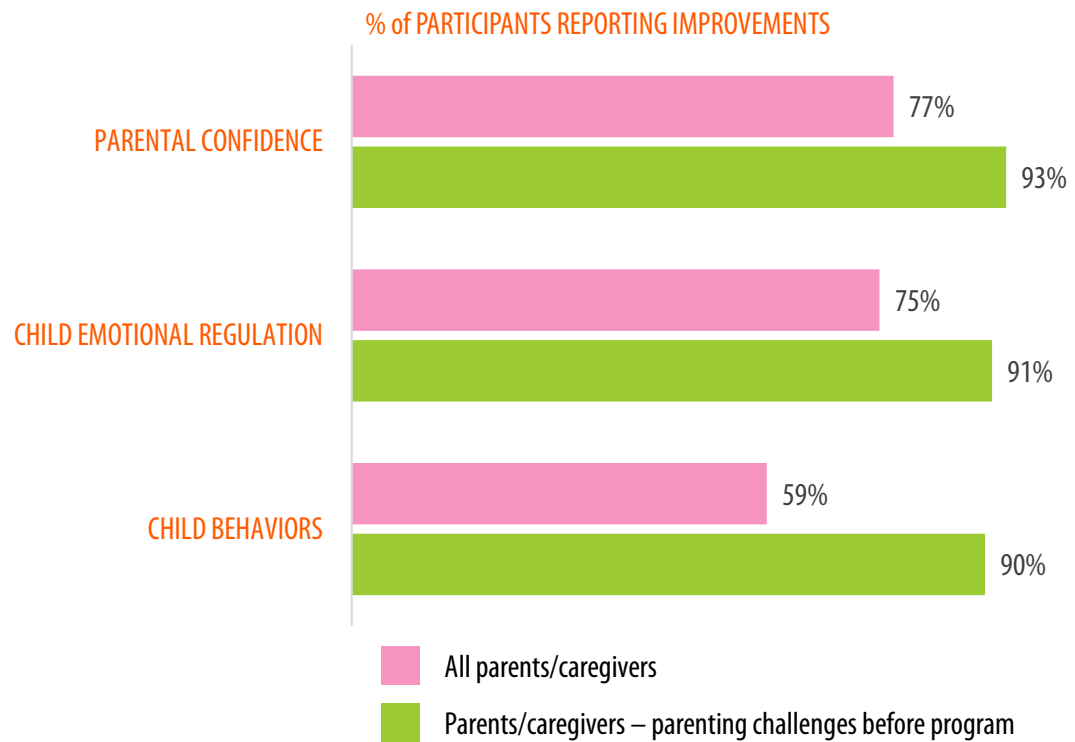


<sup>1</sup> May include adults & children who participate in more than one service

## LOCAL OUTCOMES: IN-DEPTH SERVICES (2018 – 2022) <sup>2</sup>

The majority of **all parents and caregivers** who complete in-depth Triple P services report significant improvements in key outcomes.

Triple P is particularly effective for parents/caregivers who are **experiencing more serious parenting challenges** when they begin the program.



<sup>2</sup> New Triple P evaluation tools were adopted in 2018.

## TRIPLE P: STRENGTHENING PARTNERSHIPS & RELATIONSHIPS IN SANTA CRUZ COUNTY

### Key Partners (partial list)

- Central California Alliance for Health (Santa Cruz, Monterey, Merced)
- Community Bridges – Family Resource Centers
- Cradle to Career Santa Cruz County
- Encompass Community Services – Families Together
- Monarch Services
- Pájaro Valley Unified School District – Family Engagement & Wellness Center
- Parents Center
- Salud Para La Gente
- Santa Cruz Community Health Clinics
- Sheriff's Office – Inmate Programs
- Stanford Children's Health – Neurodevelopmental Foster Care Clinic
- Independent Triple P practitioners

### What Families are Saying

**98%** of surveyed participants would **recommend Triple P to their family and friends**

"Triple P has given me solid tools that are effective, positive, and useful. Thank you very much!"

"I'm a first-time dad and I was really concerned. Triple P has helped me with my family and being a good dad."

"I would tell [other parents] to really consider Triple P. I know a lot of the time we are afraid to ask for help because we think people will judge us, but this program is really worth it. This experience was a blessing."

Triple P is available in English and Spanish to all families in Santa Cruz County, thanks to a partnership between **First 5 Santa Cruz County** and the County of Santa Cruz's Health Services Agency, Human Services Department, and Probation Department.